



Local Governments
for Sustainability

EUROPE

Cities and the Circular Economy

Simon Clement,
ICLEI – Local Governments for
Sustainability

ICLEI Members Webinar
11 October 2023



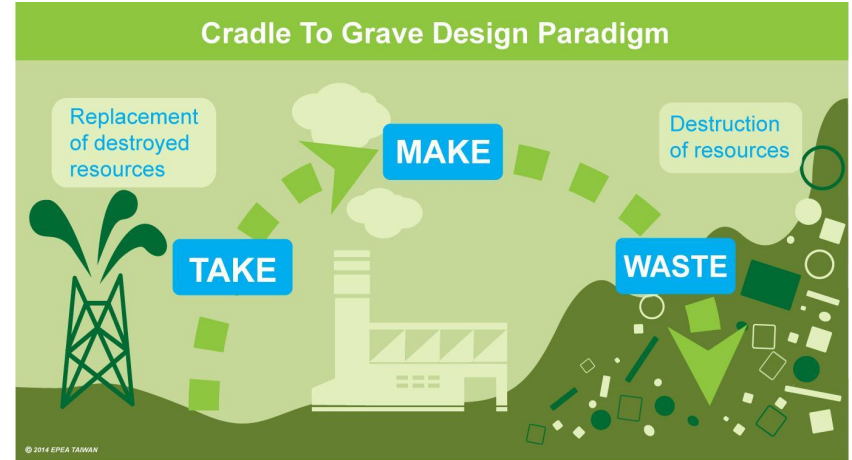
THE CIRCULAR ECONOMY



SYSTEMIC DESIGN FLAW

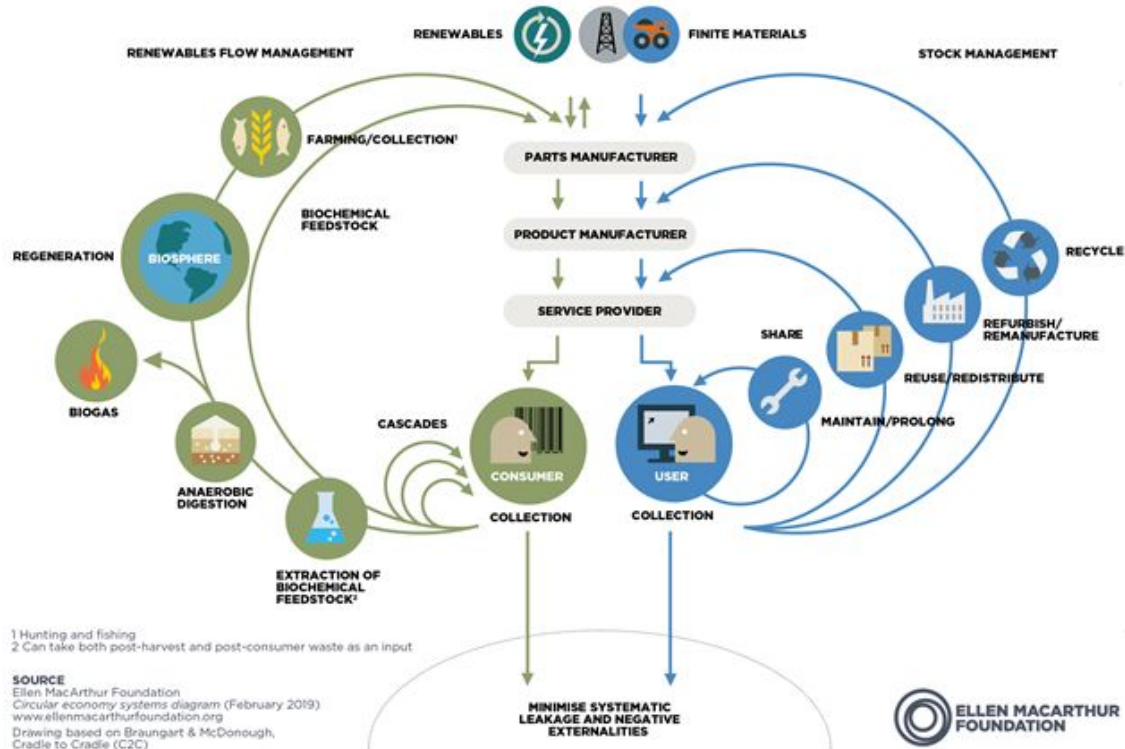
Circularity Gap Report 2023:

- 70% of global greenhouse emissions are released during the extraction, processing and manufacturing of goods.
 - Over 90% of biodiversity loss caused by material extraction and use
 - Only 7% of materials globally are reused
 - Resource demand has more than tripled since 1970 and could double again by 2050 - demand imbalance already being felt
- > **Limiting global warming to 1.5°C above pre-industrial levels can only be achieved through a circular economy.**



Source: C2C Platform, <http://www.c2cplatform.tw/en/c2c.php?Key=1>.

THE CIRCULAR ECONOMY



CIRCULAR CITY ACTIONS FRAMEWORK

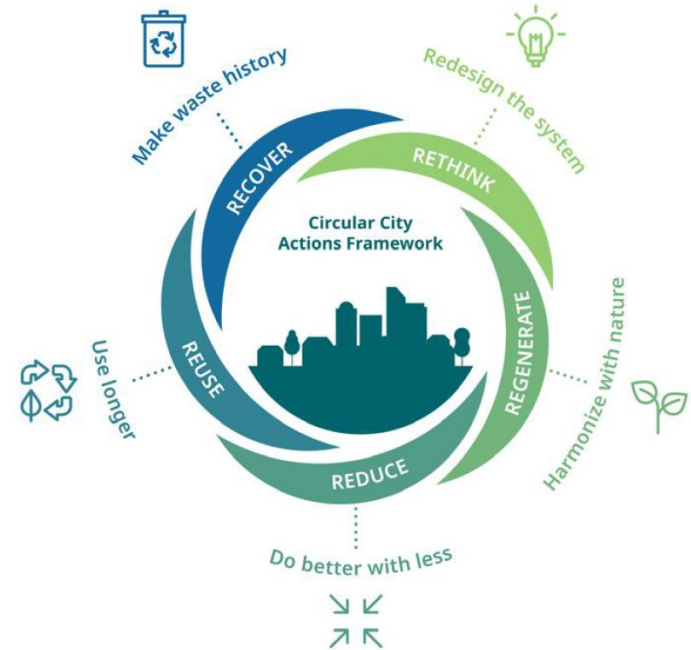
Reduce – Design infrastructure, processes and products to minimize material, water and energy use and waste generation from production to end of use

Reuse – Extend and intensify use of existing resources, products, spaces and infrastructure

Recover – Maximize the recovery of resources at the end of the use phase and reintroduce them into production processes

Regenerate – Embrace infrastructure, production systems that allow natural ecosystems to thrive

Rethink – Redesign the system to enable the transition



Circular City Actions Framework - ICLEI, Circle Economy, Metabolic, Ellen MacArthur Foundation

CITIES AND THE CIRCULAR TRANSITION



HOW DO CITIES BENEFIT?

Minimise environmental footprint – Reducing global GHG emissions and other air pollutants, minimising biodiversity loss, reducing waste generation and resource extraction

Job creation and development – Providing new local business opportunities and employment in the repair, reuse, repurposing, recycling and circular design

Resilience – Reduce dependence on global supply chains, and boost resilience to price and supply shocks

Social justice – Promoting a sharing, collaborative and inclusive regional economy

Regulatory compliance – Ensure compliance with current and future legislation

WHAT CAN CITIES DO?

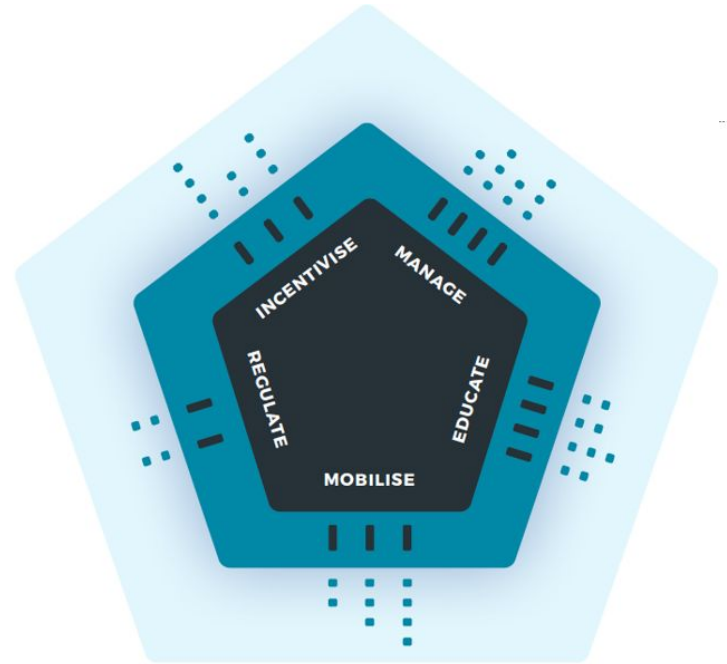
Mobilise – Establish roadmaps and targets, convene stakeholders

Educate – raise awareness, promote research, data collection and knowledge sharing

Manage – Optimise city planning and infrastructure, circular asset management, circular procurement

Incentivise – Provide funding, optimise taxes, charges and subsidies, incubators

Regulate – Bylaws, bans



Circle Economy – Urban Policy Instruments Framework

CITY CHALLENGES

1. **Overcoming capacity and resource limitations** – finance, land, infrastructure, staff/skills
2. **Securing political support and breaking down silos** – the need for integrated governance, cross-departmental collaboration, stakeholder engagement
3. **Measuring circularity** – prioritising actions, measuring impact, demonstrating the link to other policy goals
4. **Shifting the paradigm: Thinking circular in a linear system** – taxation, regulations, certification, and „business as usual“ thinking

Source: [Circular Cities Declaration Report 2022](#)

ONGOING INITIATIVES



CIRCULAR CITIES DECLARATION



The **European Circular City Declaration (CCD)** is a commitment document which local and regional governments across Europe can sign to help **accelerate the transition from a linear to a circular economy** in Europe.

Developed and managed by a broad group of **Support Partners**

[Download the Declaration](#)

[Download the CCD Report 2022](#)

www.circularcitiesdeclaration.eu



Signatories (78)

ALBANIA

[Tirana](#)

BELGIUM

[Bruges](#)

[Ghent](#)

[Leuven](#)

[Liège](#)

[Mechelen](#)

[Roeselare](#)

[Temse](#)

BULGARIA

[Burgas](#)

CZECHIA

[Prague](#)

DENMARK

[Capital Region Denmark](#)

[Copenhagen](#)

[Høje-Taastrup](#)

[Roskilde](#)

FINLAND

[Espoo](#)

[Helsinki](#)

[Lappeenranta](#)

[Mikkeli](#)

[Oulu](#)

[Tampere](#)

[Turku](#)

FRANCE

[Est Ensemble Grand Paris](#)

[Greater Paris Metropolis](#)

[Grenoble](#)

[Lille Métropole](#)

GERMANY

[Aachen](#)

[Berlin](#)

[Frankfurt am Main](#)

[Freiburg im Breisgau](#)

[Haar](#)

GREECE

[Trikala](#)

HUNGARY

[Budapest](#)

IRELAND

[Dún-Laoghaire-Rathdown](#)

[Fingal County](#)

ITALY

[Florence](#)

[Genoa](#)

[La Spezia](#)

[Prato](#)

LUXEMBOURG

[Esch-sur-Alzette](#)

[Sanem](#)

[Wiltz](#)

NETHERLANDS

[Arnhem-Nijmegen GMR](#)

[Haarlem](#)

[Rotterdam](#)

NORWAY

[Bergen](#)

[Oslo](#)

PORTUGAL

[Águeda](#)

[Albergaria-a-Velha](#)

[Braga](#)

[Évora](#)

[Guimarães](#)

[Loures](#)

[Mangualde](#)

PORTUGAL (cont.)

[Matosinhos](#)

[Mealhada](#)

[Melgaço](#)

[Porto](#)

[Torres Vedras](#)

[Valongo](#)

SLOVENIA

[Ljubljana](#)

[Maribor](#)

SPAIN

[Alcoi](#)

[Manresa](#)

[Murcia](#)

[Picanya](#)

[Rivas-Vaciamadrid](#)

[Seville](#)

[Valladolid](#)

[Vallès Occidental](#)

[Vistabella del Maestrat](#)

SWEDEN

[Eskilstuna](#)

[Gothenburg](#)

[Malmö](#)

[Umeå](#)

SWITZERLAND

[Zurich](#)

TURKEY

[Izmit](#)

UNITED KINGDOM

[Glasgow](#)

[Wolverhampton](#)

CITYLOOPS

Demonstration of circular city solutions in small and medium sized cities:

- **Construction & demolition waste** (CDW), including soil in Apeldoorn (NL), Bodø (NO), Høje-Taastrup (DK), Mikkeli (FI), Roskilde (DK), Seville (ES)
- **Bio-waste** in Apeldoorn (NL), Mikkeli (FI), Porto (PT), Seville (ES)

Guidance for local governments on:

- Promoting a circular construction sector
- Promoting a circular bio-waste sector



www.cityloops.eu



Funded by the Horizon Europe
programme of the European
Union

CIRCULARINVEST

Provides **project development assistance** (PDA) to promoters of local and regional circular projects to develop robust investment propositions

Support offered:

1. Circularity assessment and optimisation
2. Business plan development
3. Fundraising assistance

Next call for proposals to be launched on
13 October 2023 (this Friday)

circular
invest

www.circularinvest.eu



Funded by the Horizon Europe
programme of the European
Union

FURTHER ICLEI CE PROJECTS

- [Definite-CCRI](#) - Project development assistance (PDA) for circular projects
- [Circular Biocarbon](#) - biorefinery innovation project
- [BUS GoCircular](#) - boosting circular construction skills
- [SYMSITES](#) - Demonstration: Valorisation of wastewater and waste
- [BIOMODEL4REGIONS](#) - Innovative bioeconomy governance models
- [P2GreenN](#) - Regional nitrogen and phosphorous reuse from human sanitary waste
- [Hubs4Circularity](#) - European community of practice promoting I-US
- [REDOL](#) - redesigning 5 value chains in Zaragoza (packaging, plastics, CDW, textiles, WEEE)
- [CHORIZO](#) - Research on approaches for reducing food waste

Find out more: <https://iclei-europe.org/topics/circular-economy/>

CITY CIRCULARITY IN PRACTICE

- [Circular Cities Declaration Report 2022](#) – implementation reports from 40 CCD signatories
- [A Catalogue of Circular City Actions and Solutions](#), EIB Circular City Centre – examples from cities across Europe in eight key economic sectors
- [Circular Cities and Regions Initiative \(CCRI\) resource centre](#)
- [European Circular Economy Stakeholder Platform](#)
- [Ellen MacArthur Foundation – Circular Economy in Cities Programme](#)
- [Circular Cities Knowledge Hub](#) – a series of resources from across the globe
- [OECD Circular Economy in Cities](#)
- [Metabolism of Cities – case studies library](#)

CONTACTS

ICLEI EUROPE

The ICLEI European Secretariat is based in Freiburg (Germany) with offices in Brussels (Belgium) and Berlin (Germany).

Name Simon Clement

Position Head of Circular Economy

Email simon.clement@iclei.org



iclei-europe.org



ICLEI_Europe



@ICLEI_Europe



@ICLEI_Europe

WHY WORK WITH CITIES?

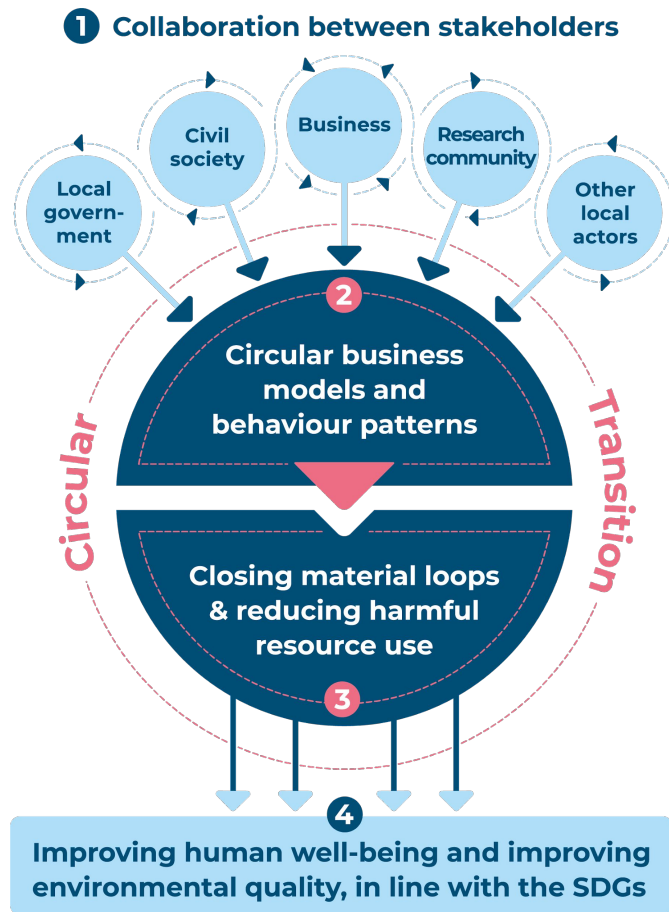
Cities....

- House 75% of the EU population
- Consume 75% of natural resources
- Produce 50% of global waste
- Produce 60-80% global GHG emissions

- Cities offer scale to allow for **demonstration**...
- ...yet are small and agile enough for **experimentation**
- Cities are **cradles of innovation**
- Local governments hold key **legislative and management functions**

THE CIRCULAR CITY

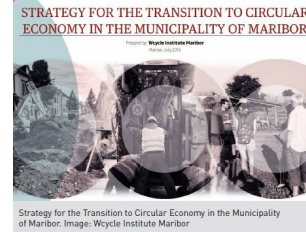
- **A city of circular integration:** where circular principles are applied across all city functions, and in collaboration with all local stakeholders.
- **A city that generates and retains value:** where innovative design and production methods, service-based business models and consumption behaviour prioritise maintaining the value and utility of assets.
- **A city of closed loops:** where products and materials are kept in use, and waste and harmful resource use is minimised.
- **A liveable city:** of low-emissions, regenerated natural systems and improved human health and wellbeing.



CITY EXAMPLES

MARIBOR – Setting the direction

Strategy for the transition to the circular economy established in 2018 – updated 2021



BUDAPEST – Community composting

Community composting points set up in 5 city districts, within the HungAIRy project



HAARLEM – Circular procurement

Targets: 50% circular procurement by 2025, 100% by 2030v



Source: Circular Cities Declaration Report 2022

CITY EXAMPLES

COPENHAGEN – Innovation platform

Circular Copenhagen Innovation Platform fosters collaboration between innovative companies and knowledge institutions



GHENT – Repair cafés

Gent Repareert programme of repair cafes, established in partnership with the local waste company



WILTZ – Circular school campus

Maximised use of circular materials, designed for flexibility, reuse of rainwater and renewable energy



Source: Circular Cities
Declaration Report 2022